

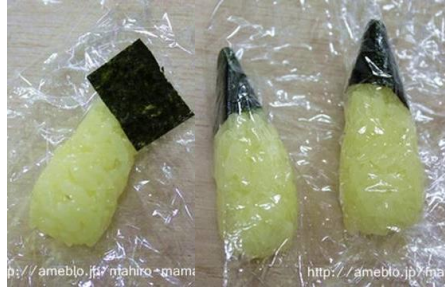
## Pokemon Character Bento - Pikachu Onigiri

### Ingredients

- 1 Hot cooked white rice, as desired
- 1 Nori seaweed (to taste)
- 1/2 Wiener sausages
- 1 slice, Sliced cheese (1 x 1 cm)
- 3 cm Uncooked spaghetti strand



Wrap in plastic wrap, and shape the face and ears. (For reference, 40 g for the face and 15 g for the ears.)



Wrap nori seaweed around the points of the ears at an angle. Wrap up in plastic wrap again, and fit it together.



Place the face into the bento box.



Stick a spaghetti noodle in an ear, and use it to attach the ear to the head.



Do the same for the other ear.



Make the face parts with nori seaweed.



Cut the tips off of wieners for the cheeks. You can also use the red portion of imitation crab sticks.



Use a small straw to cut circles out of sliced cheese, use it as the pupils, and it is done.